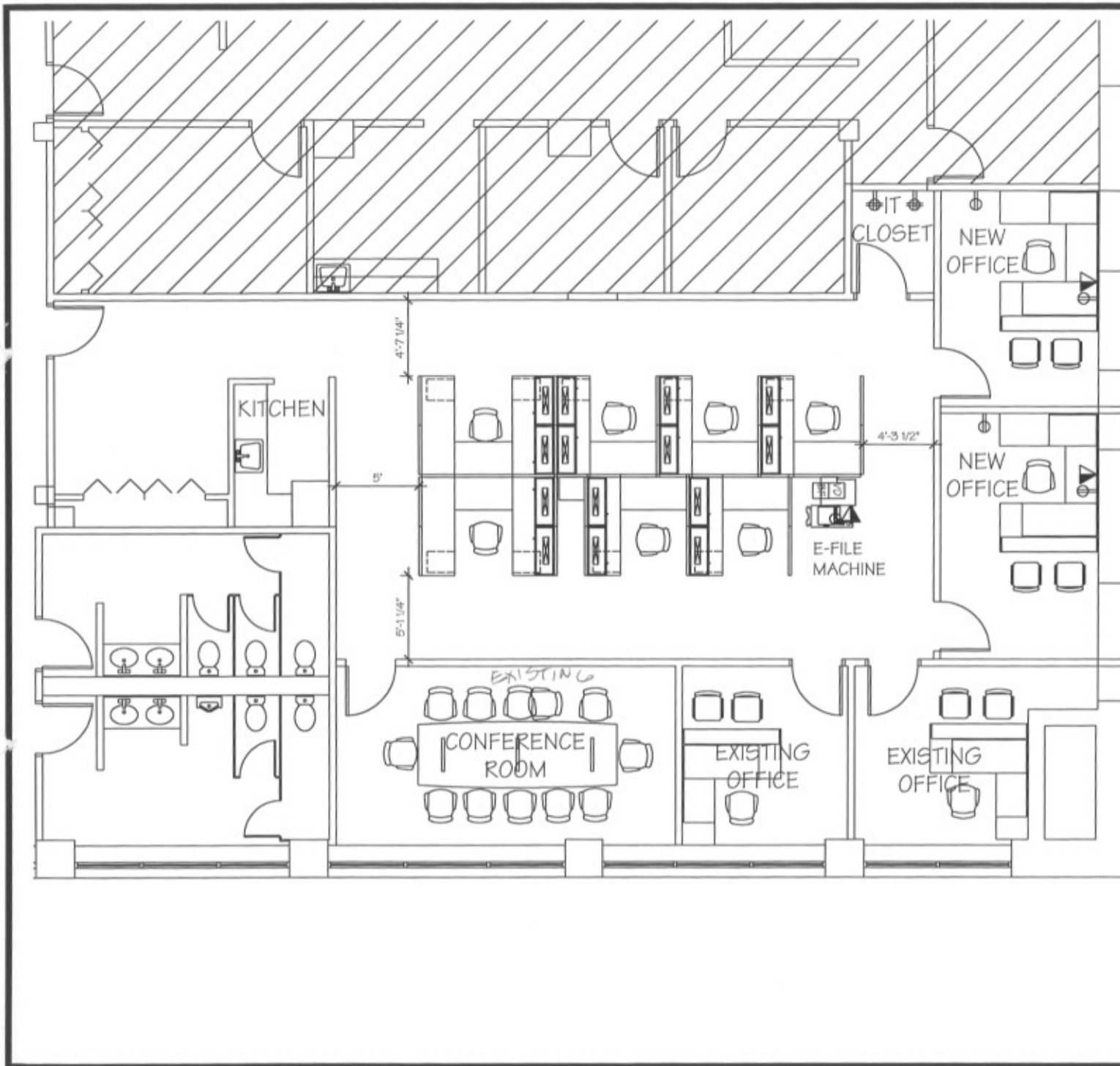


# EXHIBIT A



Prepared by:  
AFFORDABLE OFFICE INTERIORS  
365 E. North Ave.  
Carol Stream, IL 60188  
P: 630.784.7730  
Jennifer Shamowski/Lauren Jaroswak



LOCATION: TAC-CHICAGO  
ADDRESS: 118 SOUTH CLINTON  
LOCAL MANAGER: KNUTE HENNING

- ELECTRICAL LEGEND**
- FURNITURE ELECTRICAL BOX  
ELECTRICAL CONNECTION FOR TENANT PROVIDED FURNITURE BASEFEEED AND/OR TOPFEED (3 CIRCUIT SYSTEM)  
LANDLORD'S CONTRACTOR TO CONNECT BASEFEEED TO BUILDING POWER AT TIME OF INSTALLATION.  
TENANT TO PROVIDE & INSTALL PANEL TO PANEL ELECTRICAL CONNECTION & (2-3) RECEPTACLES PER WORKSTATION
  - VOICE/DATA BOX  
VOICE/DATA CONNECTION FOR MULTIPLE LOCATIONS.  
LANDLORD'S CONTRACTOR TO PROVIDE CONDUIT AND PULL STRING.  
TENANT TO PROVIDE & PULL CATS WIRING.
  - DUPLEX ELECTRICAL OUTLET
  - QUAD ELECTRICAL OUTLET -DEDICATED
  - DEDICATED DUPLEX ELECTRICAL OUTLET - 20 AMP (FOR COPIER)
  - VOICE/DATA CONNECTION  
TENANT TO PROVIDE & PULL CATS WIRING
  - CABLE CONNECTION FOR SATELLITE

**GENERAL NOTES:**  
SPACE PLAN COINCIDES WITH 3 PAGE SPEC SHEET & MUST BE APPROVED & SUBMITTED AS ONE DOCUMENT

FINAL PLAN APPROVED:  
SIGNATURE: \_\_\_\_\_  
DATE: \_\_\_\_\_  
\*Local Manager to sign and return via email along with 3 page spec sheet  
DATE DRAWN: 10.18.07 RVS-11.01.07  
SCALE: 1/8" = 1'-0"  
SALES: SHARNOWSKI  
DRAWN BY: LAUREN SHEET: