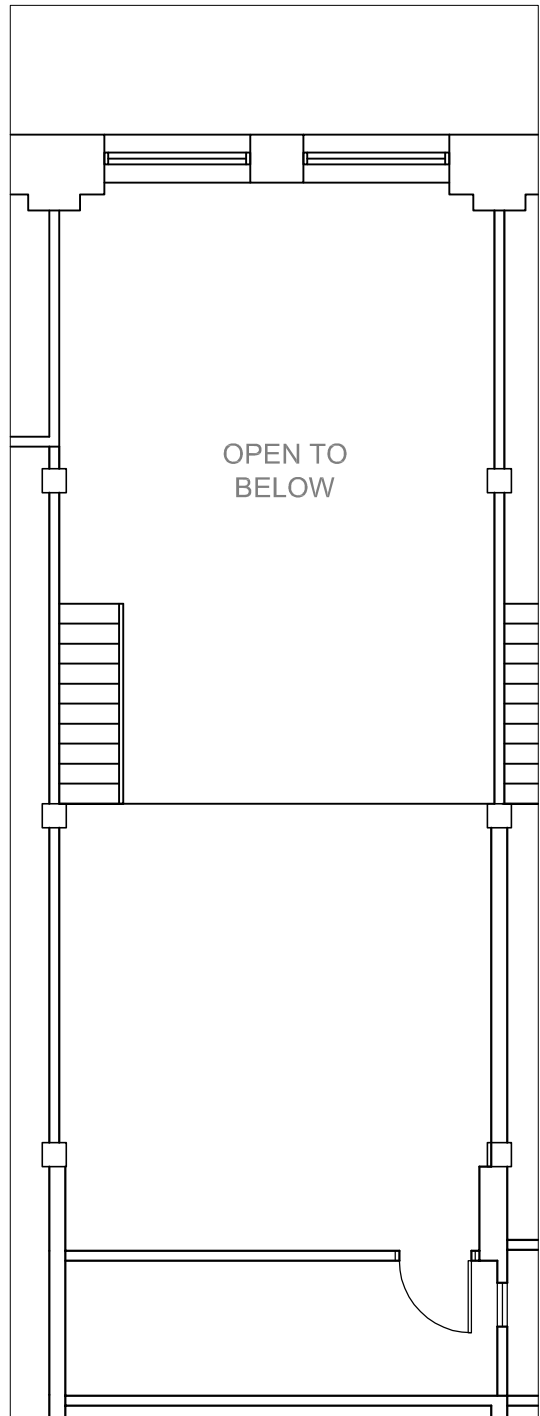


GROUND FLOOR PLAN



MEZZANINE PLAN



zpda
ARCHITECTS

542 South Dearborn Suite 1400
Chicago, IL 60605
312 . 322 . 7500
fax 312 . 322 . 7505
www.zpdarch.com

**445 ERIE BUILDING
SUITE 110**
445 WEST ERIE STREET
CHICAGO, IL 60654

REMARKS:
1ST FLOOR EXISTING CONDITIONS PLAN

Scale:
N.T.S.
zpda Project No.
04A051.00

Date:
11-19-09

By:
MA

SP-110
SHEET NO.