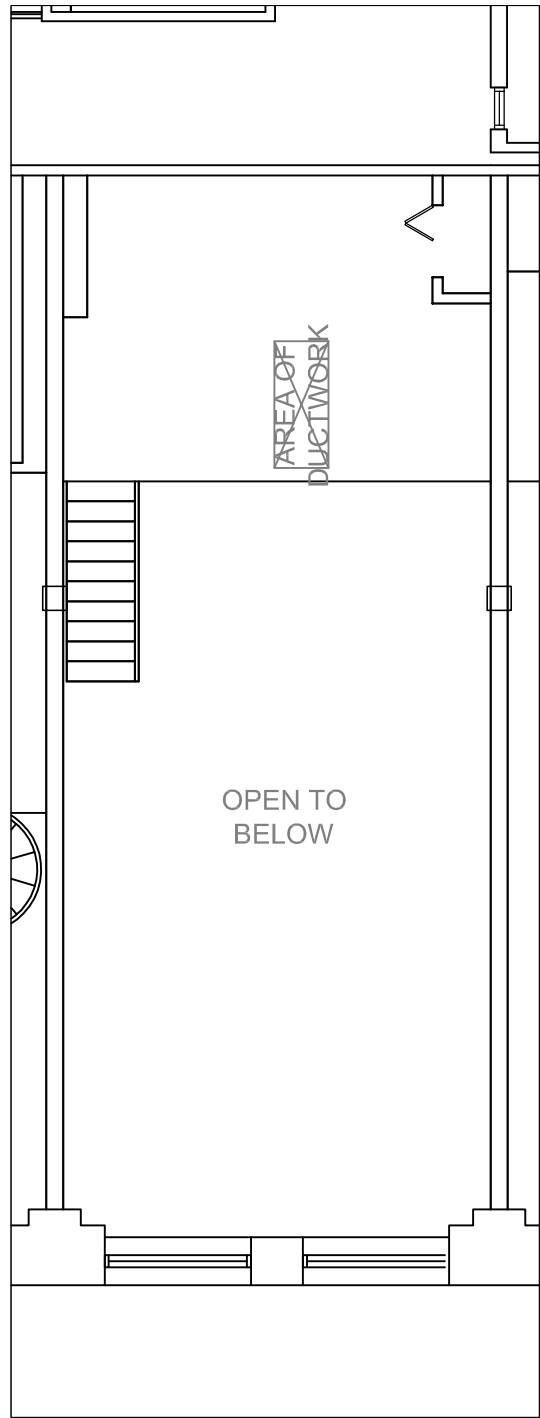


GROUND FLOOR PLAN



MEZZANINE PLAN



zpda
ARCHITECTS

542 South Dearborn Suite 1400
Chicago, IL 60605
312.322.7500
fax 312.322.7505
www.zpdarch.com

**445 ERIE BUILDING
SUITE 205**
445 WEST ERIE STREET
CHICAGO, IL 60654

REMARKS:
2ND FLOOR EXISTING CONDITIONS PLAN

Scale:

N.T.S.

zpda Project No.

04A051.00

Date:

11.06.09

By:

MA

SP-205

SHEET NO.